

ISLANDS



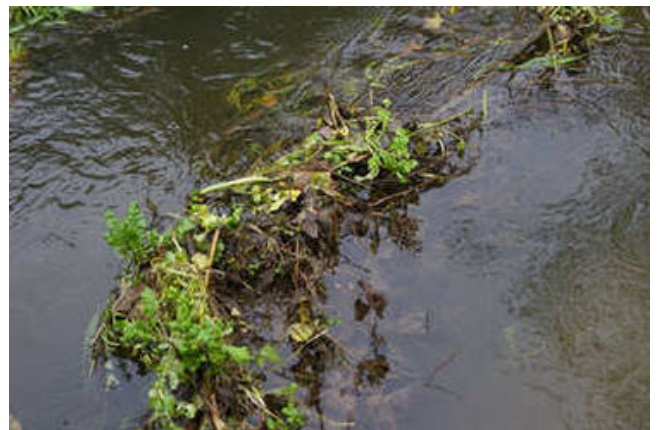
Mid-stream island; weaving hazel around the perimeter stakes [04/10]



Mid-stream islands constructed (and LWD 2 upstream) [05/10]



Mid-stream islands after putting riffle 3 in place [06/10]



Mid-stream islands retaining debris at 2 days after a heavy rain event and 20 days after construction [25/10]



Mid-stream islands at 2 months after construction [07/12]